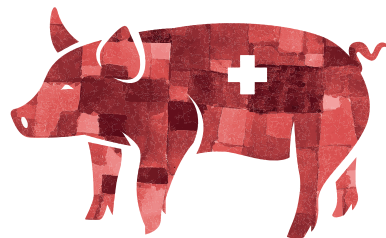




# ESPHM



# 2025

## 16<sup>th</sup> EUROPEAN SYMPOSIUM OF PORCINE HEALTH MANAGEMENT

BERN/SWITZERLAND  
May 21<sup>st</sup> - 23<sup>rd</sup>, 2025

**ECPHM** EUROPEAN COLLEGE  
OF PORCINE HEALTH  
MANAGEMENT

Universität Bern | Universität Zürich  
**vetsuisse-fakultät**

CONGRESS VENUE Kursaal Bern, Switzerland

# SPONSOR PROSPECTUS



Dear Esteemed Members of the Porcine Health Management Community,

It is my great pleasure and honor to extend to you a warm welcome to the European Symposium of Porcine Health Management (ESPHM) 2025, which will be held in the picturesque city of Bern, Switzerland.

As we gather together for this momentous event, we reflect on the journey that has brought us here. Originally announced in 2019 and planned for 2020, our congress faced unprecedented challenges due to the global pandemic. However, through resilience and adaptation, we transformed the obstacles into opportunities, convening virtually in 2021 to continue our vital discussions and collaborations in porcine health management.

Now, in May 2025, we are delighted to invite you to join us in person in Bern, Switzerland. Nestled amidst the breathtaking landscapes of the Swiss Alps, Bern offers a captivating backdrop for our congress. Its rich history, vibrant culture, and renowned hospitality promise to enhance our experience as we come together to advance the field of porcine health management.

Our congress is organized jointly with the European College of Porcine Health Management (ECPHM) and the Veterinary Practitioner Council (VPC), exemplifying our commitment to excellence in education, research, and practice. With a diverse program featuring keynote lectures, round table discussions, parallel scientific sessions, and endless networking opportunities, the ESPHM 2025 promises to be a stimulating and enriching event for all attendees.

We extend our invitation to all pig veterinarians, researchers, industry professionals, policymakers, and other stakeholders who share our passion for promoting the health and well-being of pigs. Your expertise, insights, and contributions are invaluable as we work together to address the evolving challenges and opportunities in porcine health management.

On behalf of the Organizing Committee, I invite you to join us in Bern for a congress that promises not only professional growth and collaboration but also unforgettable experiences and connections. Together, let us forge new pathways, share knowledge, and inspire innovation in porcine health management.

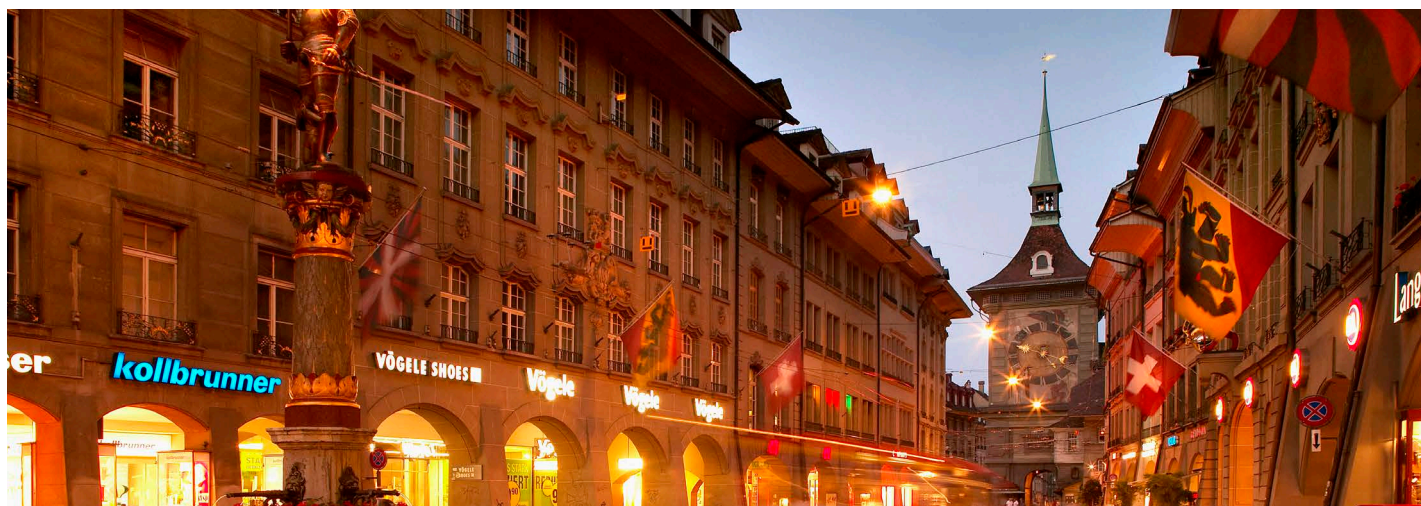
We look forward to welcoming you to Bern, Switzerland, for the ESPHM 2025.

Warm regards,

Heiko Nathues  
*Chair of the Local Organizing Committee of the ESPHM 2025*

LOCAL ORGANISING  
COMMITTEE**Heiko Nathues***Chair***Alexander Grahofer***Vetsuisse Bern***Dolf Kümmerlen***Vetsuisse Zürich***Patricia Scheer***Cantonal Veterinary Office Bern***Robert Graage***Swine Health Service QGS***Vroni Jeker***Swiss Association of Swine Health***Fabienne Holenweger***Young Pig Vets*

## BOARD OF THE ECPHM

**Nicolas Rose***President***Carl Andreas Grøntvedt***Vice-President***Heiko Nathues***Past-President***Doris Höltig***Treasurer***Elena Canelli***Secretary***Arie van Nes***Ordinary Board Member***Christine Unterweger***Ordinary Board Member*VETERINARY  
PRACTITIONER COUNCIL**Andreas Birch***Ø-Vet A/S***Antonio Vela Bello***ThinkinPig***Ursula Friedmann***PFI DR VET – Die Tierärzte OG***Salome Siegenthaler***Clinic for Swine, Bern University***Karien Koenders***Lintjeshof Farm Health Solutions***Piotr Cybulski***Goodvalley Agro S.A.***Martin Pfützner***Tierärztliche Praxis am Weinberg*



WEDNESDAY 21<sup>st</sup> May 2025

<b>MORNING</b>	Set-up
<b>AFTERNOON</b>	Welcome & Open Ceremony Keynote Sessions Coffee Break & Poster Viewing Parallel Sessions ECPHM Annual General Meeting Welcome Reception

THURSDAY 22<sup>nd</sup> May 2025

<b>MORNING</b>	Keynote Sessions Coffee Break & Poster Viewing Parallel Sessions Lunch & Poster Session
<b>AFTERNOON</b>	Keynote Sessions JPHM Parallel Sessions Coffee Break & Poster Viewing Parallel Sessions
<b>EVENING</b>	Farewell Dinner

FRIDAY 23<sup>rd</sup> May 2025

<b>MORNING</b>	Keynote Sessions Coffee Break & Poster Viewing Parallel Sessions Closing Ceremony
----------------	--

## CONGRESS VENUE

Kursaal Bern  
Kornhausstrasse 3  
3013, Bern

Centrally located in downtown Bern, the Kursaal is a unique Congress and Culture Center with marvellous views of both the city's skyline as well as the Alps. The Kursaal Bern offers no fewer than 30 attractive rooms for congresses, seminars, dialogue and discussion – with capacity from 2 to 1,500 persons. The Kursaal Bern is a renowned entertainment hotspot; it includes the four-star Hotel Allegro and the Grand Casino Bern. The Kursaal Bern offers a variety of themed restaurants. The recently renovated Arena is the ideal setting for concerts or banquets.



## HOTEL ACCOMMODATION

For your hotel reservation in Bern at special rates and conditions, please refer to the official booking section on the ESPHM 2025 website.



## OFFICIAL LANGUAGE

The official language of the Conference is English.

ORGANISING SECRETARIAT  
ESPHM 2025

## VET INTERNATIONAL

Via Carlo Farini 81  
20159 Milano - Italy  
Ph: +39 02 66802323  
E-mail: [info@esphm2025.org](mailto:info@esphm2025.org)



*Please note that VET INTERNATIONAL is the only company entitled to manage the logistical aspects and handle payments for ESPHM 2025. In order to prevent fraud, please disregard any request coming from external companies, unless otherwise indicated by VET INTERNATIONAL itself.*



## SUSTAINABILITY

Sustainability is a very important issue for the ESPHM Organizing Secretariat, which should be considered for both the current and the future editions of the Symposium. Some important actions have been taken in this regard and will be communicated in due time.

With this event, we would like to promote such a relevant value to all our stakeholders, including Sponsors. Therefore, we would like to offer you the opportunity to contribute through special initiatives which will be presented in this document.

## HOW TO REACH BERN

### EASILY ACCESSIBLE AND QUICKLY REACHED



Bern is situated in the heart of Switzerland and can easily be reached by air, rail or road.



### BY PLANE

#### Bern Airport

The small airport connects Bern with European cities such as London, Berlin and Munich. Thanks to its compact size, only a short time is needed for arrivals and departures. The city can be reached by public transport. The airport bus takes passengers to Bern train station. From there, you can take a metro to Bern main station. For visitors staying in Bern overnight, the journey by public transport from the airport to the city is included in the Bern Ticket.

#### Zurich Airport

Zurich Airport is Switzerland's largest airport. You can reach Bern central station from the airport train station in less than one hour and 15 minutes by train.

The trains with direct connections from the airport to the capital depart every 30 minutes.

#### EuroAirport Basel Mulhouse Freiburg

EuroAirport is located near the borders of Switzerland, France and Germany and is a popular destination served by EasyJet and other low cost airlines. Bern can be reached via Basel SBB train station in around one hour. Trains from Basel SBB to Bern depart every 30 minutes.

#### Geneva Airport

Geneva Airport, which is a famous EasyJet and Eurowings destination, is also well connected to the Swiss rail network. Geneva Airport train station can be reached directly from the arrivals hall. Direct trains to Bern depart every 30 minutes. The journey takes just under two hours.

#### Distances from the main Swiss airport

Basel	100 km
Zurich	120 km
Geneva	160 km
Lugano	240 km



### BY TRAIN

Bern is an important transportation hub within Switzerland.

There are regular, direct train connections to all larger Swiss towns, as well as to Europe's most important cities. Passengers can reach Zurich, Basel, Interlaken and Lucerne in under an hour with a direct connection.

For foreign visitors, who are planning a longer stay in Switzerland and want to discover the country and its sights using public transport, we recommend purchasing a Swiss Travel Pass. The Swiss Travel System provides visitors to Switzerland with tickets for the entire Swiss public transport network. It offers affordable all-in-one tickets including the Swiss Pass and Swiss Flexi Pass for combined journeys by train, post bus and boat.



### BY CAR

Bern is easily reached by car. The Swiss capital has motorway links with Geneva, Zurich/Basel and the Bernese Oberland region. Once you've arrived in Bern, Bern Tourism recommends leaving your car in one of the multistory parking garages and exploring the city center on foot. The old town is car-free, except for deliveries.

### PARKING

There are around 3,500 short-term parking spaces in multistory parking garages in Bern.

In addition to the parking garages, there are also signed parking zones in Bern where you are required to display a parking disc. Parking tickets for 4 or 24 hours can be bought at Bernmobil ticket machines, as well as at other locations. The time starts as soon as the ticket is bought. You can buy additional parking tickets, which start from a certain time, from the city police.

## GENERAL INFO

### Electrical systems

The voltage in Switzerland, as in most of Europe, is 230V/50 Hz.

Switzerland uses type C (2-pin) and Type J (3-pin) plugs. (Type C 2-pin plugs also fit J sockets.)

Most power sockets are designed for three pin round plugs. The standard continental type plug with two round pins, applied for many electrical travel products, may be used without problem. Adaptors are available in most hotels.

### Foreign exchange & banking facilities

The official currency in Switzerland is the Swiss Franc CHF. British Pounds, US Dollars, and other major currencies can be easily exchanged at the following places:

- Banks
- Exchange offices
- Airport
- Major hotels

Exchange offices usually offer better exchange rates than banks. At airports, the rates may be slightly higher than in the city center.

The most commonly accepted payment options are cash, credit cards and debit cards. Credit cards and debit cards are accepted almost everywhere. The most common are Visa, Mastercard, American Express and Maestro. It is advisable to check in advance what fees apply to transactions abroad.

## VISA REQUIREMENTS TO ENTER SWITZERLAND

Every traveler must have a valid passport. Visa are required for a continuous stay of more than three months. If your stay is shorter than three months you only need to bring your valid passport with you. This applies to citizens of the following countries: countries of the American Continent (except Belize, Dominican Republic, Haiti, Colombia and Peru), Europe, Japan, Australia and New Zealand.

For more information:

<https://www.myswitzerland.com/en/planning/about-switzerland/general-facts/entry/passports-visas/>



## PARTNERSHIP OPPORTUNITIES

The Local Organizing Committee has decided to offer three levels of promotional packages - Gold, Silver and Bronze - in addition to standard sponsorship.

The following choices offer a wide range of opportunities to promote your company during the Symposium:

Gold Sponsor for an important presence;

Silver Sponsor for a remarkable presence;

Bronze Sponsor for a visible presence.

### GOLD Sponsorship

- Exhibition Space: 15-m2 area including electrical power supply (extra set-up will be at the company's own charge)
- 4 Full registrations fees to the Symposium
- 4 Tickets for the Symposium Farewell Dinner
- 3 exhibitors' badges - These badges will show only the name of the company and will allow company employees (only) access to the exhibition area
- Slide of acknowledgement at session intervals
- 1 advertising page on the Final Programme
- 2 promotional newsletter to be sent to all the ESPHM attendees (timeslot to be selected among those available).
- Company logo on the final program and website



**Package: 17.500,00 euro**

*VAT non included*

### SILVER Sponsorship

- Exhibition Space: 10-m2 area including electrical power supply (extra set up will be at the company's own charge)
- 2 Full registrations fees to the Symposium
- 2 Tickets for the Symposium Farewell Dinner
- 2 exhibitors' badges - These badges will show only the name of the company and will allow company employees (only) access to the exhibition area
- Slide of acknowledgement at session intervals
- Company logo on the final program and website



**Package: 15.500,00 euro**

*VAT non included*

### BRONZE Sponsorship

- Exhibition Space: 6-m2 area including draped table, 2 chairs, electrical power supply (extra set up will be at the company's own charge)
- 1 exhibitors' badge - This badge will show only the name of the company and will allow company employees (only) access to the exhibition area
- Slide of acknowledgement at session intervals
- Company logo on the final program and website



**Package: 9.500,00 euro**

*VAT non included*



## OTHER SPONSORSHIP OPPORTUNITIES

All the following sponsorships include the acknowledgement of the sponsor in the Final Program as well as the website. The quotations are VAT not included.

-  **Congress bags (400 items - exclusive opportunity)**

Congress bags supplied by Sponsor with the congress logo.  
The Local Organising Committee has to approve the template.  
**Congress bags must be produced with eco-friendly certified materials, preferably by local suppliers.**  
**The Company logo could be printed on a tag applied on the bag.**

€ 6.500,00 + production
-  **Pads and Pens (400 items - exclusive opportunity)**

Each congress bag will include a notepad and pen.  
The sponsor's logo will be printed on them.  
**Pads and pens must be produced with eco-friendly certified materials, preferably by local suppliers.**

€ 4.500,00 + production
-  **Eco-friendly Gadget in congress bags**

N. 1 sponsor's eco-friendly gadget will be inserted in each congress bag.  
**The Local Organizing Committee has to approve the gadget.**

€ 2.500,00 + production
-  **Advertising page on the Final Programme**

Company will provide an AD page to be included in the Final Programme, **which will be delivered online only (no printed version).**

  - AD page on the Final Programme (back cover) € 3.500,00
  - AD page on the Final Programme (internal page) € 2.500,00
-  **Coffee breaks**

The company logo will be displayed on the buffet tables.  
ESPHM 2025 offers 4 coffee breaks. Price per Coffee-break.

€ 5.000,00
-  **Welcome Reception (exclusive opportunity)**

The company logo will be printed on the signage.

€ 9.000,00
-  **Personalized water dispensers around the venue**

Customization to be agreed with the Organising Secretariat.

€ 6.000,00
-  **Congress App (exclusive opportunity)**

The APP will be available to all participants and can be downloaded on smartphones and tablet platforms.  
**Customization to be agreed with the Organizing Secretariat.**

€ 5.500,00
-  **Congress branded Lanyards (exclusive opportunity)**

Production by the Organising Secretariat.  
The Company logo will be printed on lanyards that will be distributed to all delegates.

€ 6.500,00
-  **WI FI (exclusive opportunity)**

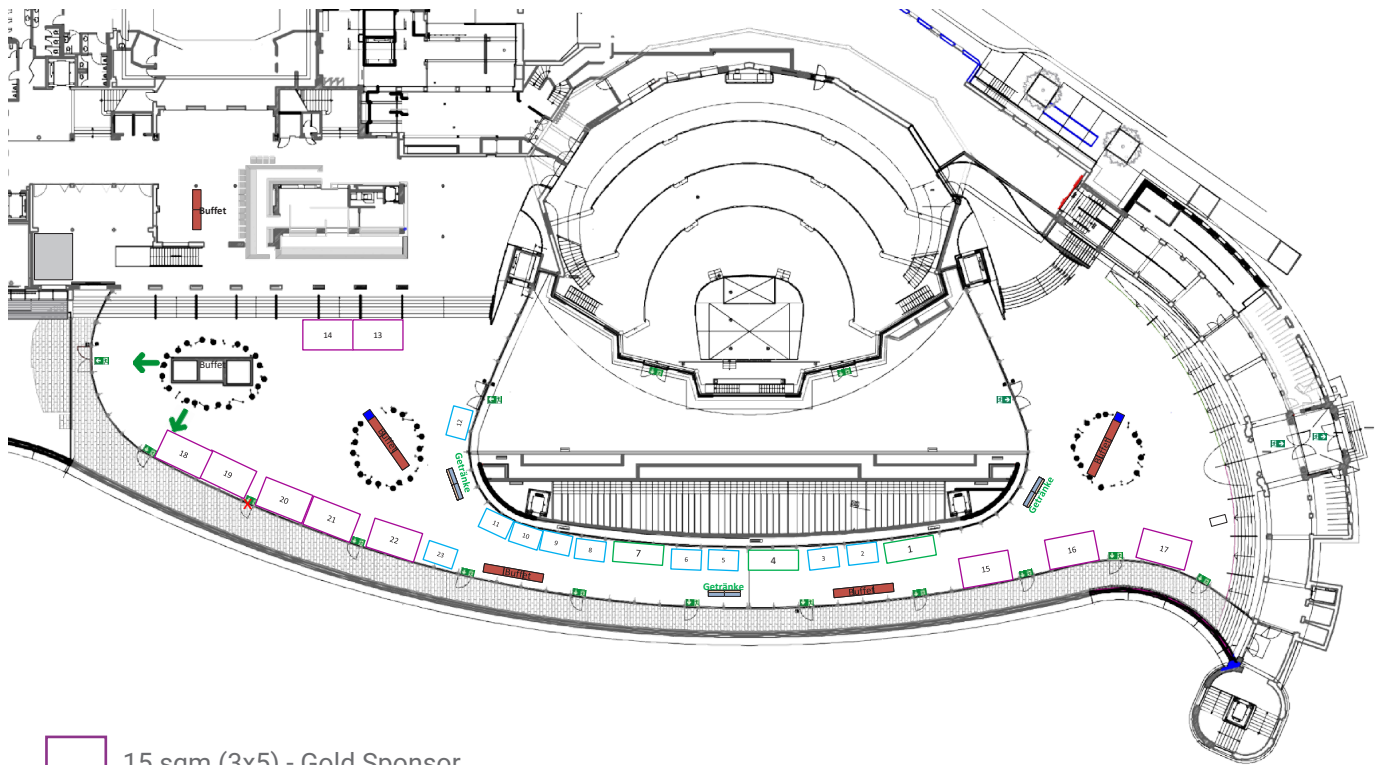
WI FI will be accessible free of charge by all the Congress attendees.  
The Company logo will be displayed in the WI FI login page.

€ 5.500,00
-  **Entertainment during the Farewell Dinner**

A unique opportunity to gain visibility also during the Social Event.

*please contact the Organising Secretariat  
for additional information*

## EXHIBITION AREA



-  15 sqm (3x5) - Gold Sponsor
-  10 sqm (2x5) - Silver Sponsor
-  6 sqm (2x3) - Bronze Sponsor



### REGISTRATION SYSTEM FOR COMPANIES

The online registration system for companies will be opened starting from November 2024.

You will find an easy way to register your group and buy the tickets for the Social Dinner, which will be held on Thursday May 22, 2025.

Remember that the early registration is available within 17th March 2025. Please note that after this deadline, the availability for the Symposium Dinner will no longer be guaranteed.



### MATERIAL COLLECTION

In order to offer you a better service and to facilitate the onsite registration procedure, we strongly recommend that the material (badges and congress bags) for your delegates be collected in advance.

Material could be collected by a representative of your company at the Pre-registered Desk located at Kursaal. Further details will follow.

We strongly recommend that you contact us to fix your appointment to pick up the delegates material in advance and avoid unnecessary queues at the registration desk.

Please note that we do not provide portorage.



### ADDITIONAL EXHIBITOR BADGES

Companies requiring additional exhibitor pass may contact the Organising Secretariat.

The cost of each additional badge is € 230,00 + VAT 8,1%.

Please note that the badge will show only the name of the company and will allow company employees (only) to access the exhibition area and to take part in all provided catering services (Social Dinner excluded).

### IMPORTANT NOTE

The Sponsor/Company agrees NOT to organize any (scientific or social) events for attendees of the ESPHM during the time slots of the scientific programme of the ESPHM 2025.

## INDUSTRY EXHIBITION

Further technical information about:

- exhibition manual
- set-up and dismantling
- storage
- pick-up of the conference material

will be sent by the end of January 2025.

Space allocation will be managed on a first-signed, first-served basis.

## DATES & DEADLINES

### OCTOBER 1, 2024

Opening abstract submission system

### DECEMBER 1, 2024

Deadline abstract submission

### MARCH 17, 2025

Deadline for reduced registration fees

# FORM A (SPONSORSHIP PACKAGES)

Please return to the Organising Secretariat by e-mail: [companies@esphm2025.org](mailto:companies@esphm2025.org)

COMPANY \_\_\_\_\_  
 LEGAL REPRESENTATIVE \_\_\_\_\_  
 ADDRESS \_\_\_\_\_  
 CITY \_\_\_\_\_ ZIP CODE \_\_\_\_\_  
 VAT or TIN or FC\* \_\_\_\_\_  
 Contact Name \_\_\_\_\_  
 Phone \_\_\_\_\_ Mobile \_\_\_\_\_  
 E-mail \_\_\_\_\_

\*[VAT code (for European Community companies) - TAXPAYER IDENTIFICATION NUMBER (TIN) (for US companies)  
 - FISCAL CODE (all the other companies)]

## SPONSORSHIP PACKAGE

We confirm our sponsorship under the following formula:

- **GOLD package** € 17.500,00 (+ VAT, if applicable)
- **SILVER package** € 15.500,00 (+ VAT, if applicable)
- **BRONZE package** € 9.500,00 (+ VAT, if applicable)

## REMITTANCE

A 20% deposit (non-refundable) is required upon confirmation of the sponsorship.

The remaining instalments are specified in the sponsorship contract which will follow, together with the relevant terms & conditions.

Full payment is required within 15th December 2024.

Should the Forms be signed further to 15th December 2024, the balance of 100% will be due as outright payment.

The Company shall remit payment by bank transfer to the following bank account:

Account Holder: VET International srl

IBAN: IT 02 S 03268 01605 052864809960 Swift-BIC: SELBIT2BXXX

Banca Sella SPA Milan – Italy

Reason for payment: COMPANY'S NAME - ESPHM 2025 Sponsorship

Date \_\_\_\_\_ Signature and company seal \_\_\_\_\_



Please return to the Organising Secretariat by e-mail: [companies@esphm2025.org](mailto:companies@esphm2025.org)

COMPANY \_\_\_\_\_  
 LEGAL REPRESENTATIVE \_\_\_\_\_  
 ADDRESS \_\_\_\_\_  
 CITY \_\_\_\_\_ ZIP CODE \_\_\_\_\_  
 VAT or TIN or FC\* \_\_\_\_\_  
 Contact Name \_\_\_\_\_  
 Phone \_\_\_\_\_ Mobile \_\_\_\_\_  
 E-mail \_\_\_\_\_

\*[VAT code (for European Community companies) - TAXPAYER IDENTIFICATION NUMBER (TIN) (for US companies) - FISCAL CODE (all the other companies)]

#### AVAILABILITY WILL BE CONFIRMED UPON A "FIRST COME, FIRST SERVED" BASIS

• Congress bags	€ 6.500 + production
• Pads And Pens	€ 4.500 + production
• Eco-friendly Gadget	€ 2.500 + production
• Lanyards	€ 6.500
• AD page on the Final Programme (back cover)	€ 3.500
• AD page on the Final Programme (internal page)	€ 2.500
• Coffee break	€ 5.000
• Welcome Reception	€ 9.000
• Personalized water dispensers around the venue	€ 6.000
• Congress App	€ 5.500
• Wi-Fi	€ 5.500

Global amount of our sponsorship is Euro \_\_\_\_\_ (+ VAT, if applicable)

#### REMITTANCE

A 20% deposit (non-refundable) is required upon confirmation of the sponsorship.

The remaining instalments are specified in the sponsorship contract which will follow, together with the relevant terms & conditions.

Full payment is required within 15th December 2024.

Should the Forms be signed further to 15th December 2024, the balance of 100% will be due as outright payment.

The Company shall remit payment by bank transfer to the following bank account:

Account Holder: VET International srl

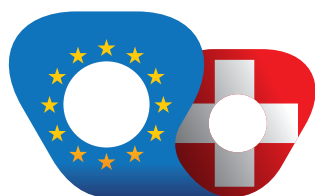
IBAN: IT 02 S 03268 01605 052864809960

Swift-BIC: SELBIT2BXXX

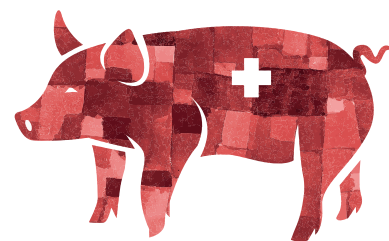
Banca Sella SPA Milan – Italy

Reason for payment: COMPANY'S NAME - ESPHM 2025 Sponsorship

Date \_\_\_\_\_ Signature and company seal \_\_\_\_\_



# ESPHM



# 2025

## 16<sup>th</sup> EUROPEAN SYMPOSIUM OF PORCINE HEALTH MANAGEMENT

BERN/SWITZERLAND  
May 21<sup>st</sup> - 23<sup>rd</sup>, 2025

**ORGANISING SECRETARIAT  
ESPHM 2025**



Via Carlo Farini 81  
20159 Milano - Italy  
Phone: +39 02 66802323  
E-mail: [info@esphm2025.org](mailto:info@esphm2025.org)